

Font: Helvetica-Condensed Bold

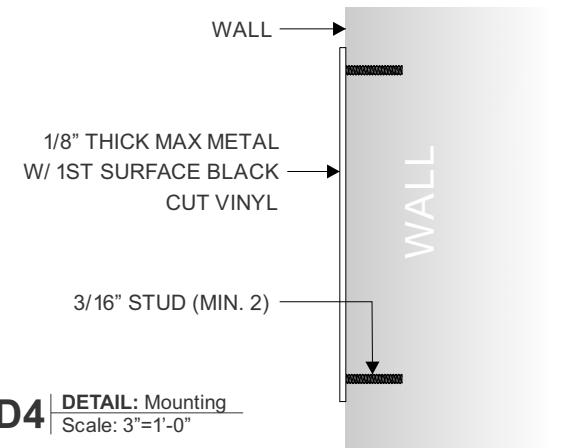


D3 | **SPECS:**
Scale: 1/4"=1'-0"

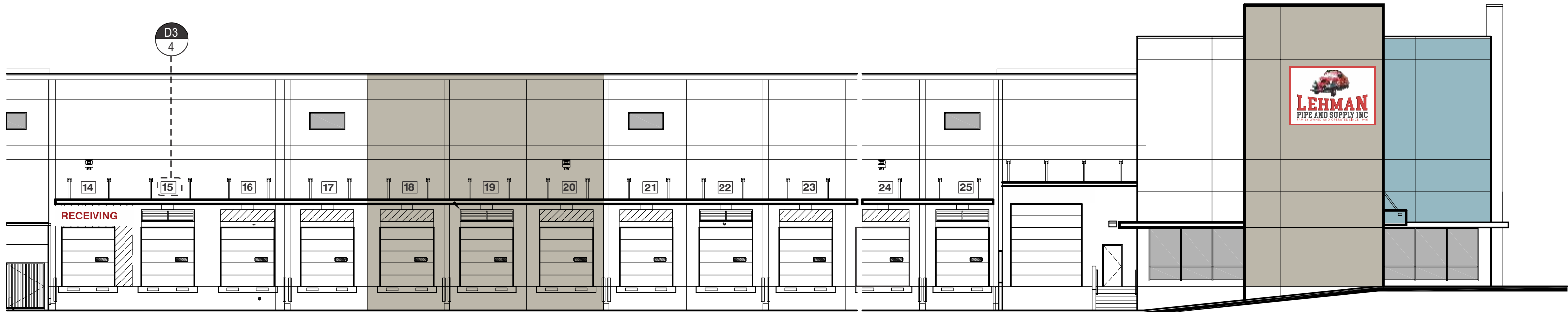
1/8" THICK MAX METAL W/
1st SURFACE BLACK CUT VINYL

WHITE BLACK

D4 | **DETAIL:** Mounting
Scale: 3"=1'-0"

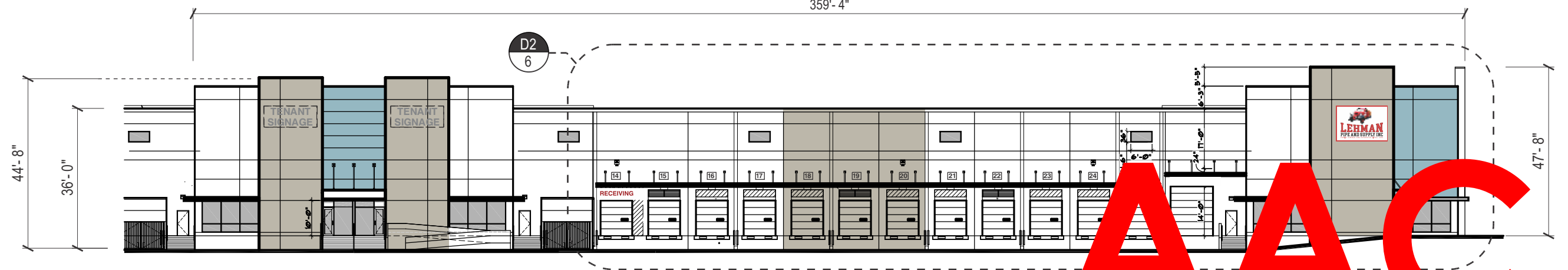


**ALL PENETRATIONS WILL BE
SEALED WITH CLEAR SILICONES**



D2 | **ELEVATION:** West
Scale: 1/16"=1'-0"

359'- 4"



D1 | **ELEVATION:** Partial West (Right)
Scale: 1/32"=1'-0"

FILE: Copan 95/ Graphics/ Copans 95-Master Sign Program-V7.cdr

CLIENT: Copans 95

ADDRESS: 1731 W. Copans Rd., Pompano Beach, FL

MUNICIPALITY: City of Pompano Beach

REVISION V2: 4/16/2020- Shipping & Receiving Height Dimensions to 15"

REVISION V3: 4/23/2020- Font (Helvetica), color PMS 2793

REVISION V4: 5/7/2020 - Request per Master Signage Program criteria

REVISION V5: 5/29/2020 - removed offices & customer pickup (pg.2), shipping (pg.5)

REVISION V6: 6/1/2020 - removed "AND SUPPLY" (pg.6 - D2)

REVISION V7: 8/13 - Updated signage, add specs

REVISION V7: 8/27/2018 - Exterior Finish Layout REVISION V6: 5/15/2018 - Updated Interior
REVISION V8: 8/27/2018 - Updated Foundation

B720 300000000

*Colors shown on drawing are of presentation

SALE REP: Jack

10/6/2020 ARIST: Vermaine A.